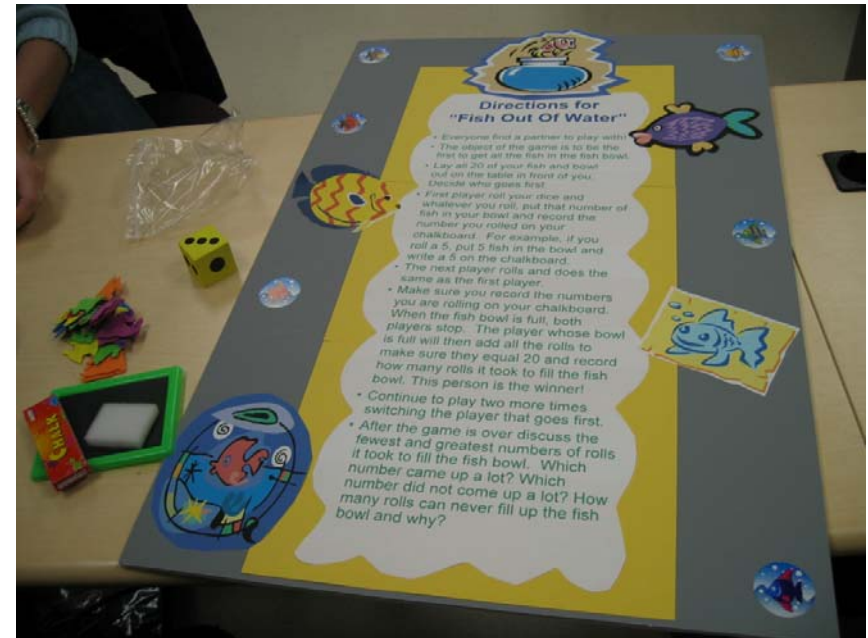


Fish Out of Water

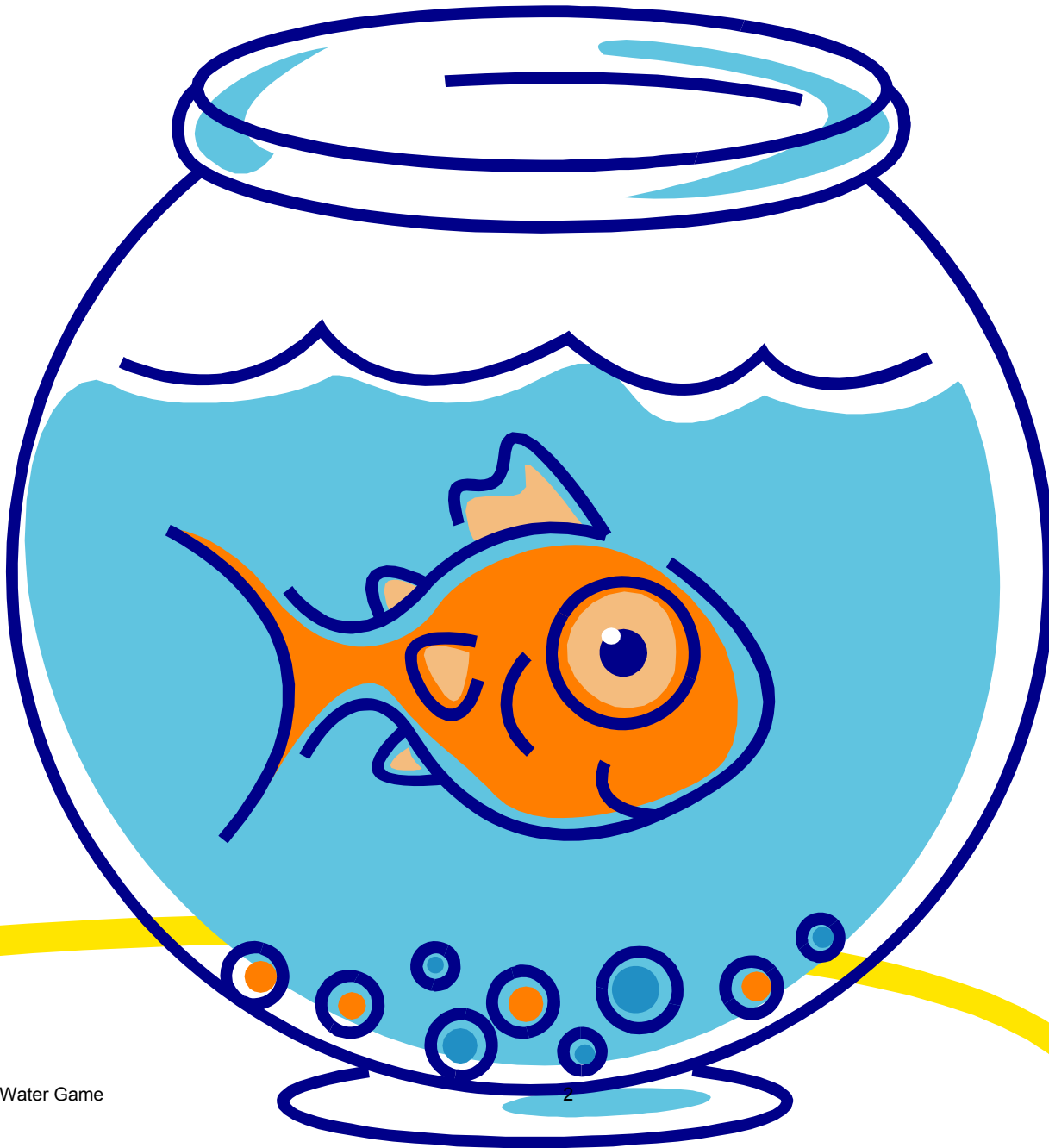


- Each partner lays out 20 fish.
- Toss die. Return that many fish to bowl.
- Partners takes turns.
- First player to return all fish to the bowl wins.
- Record how many die tosses it took on class graph.



Game designed by Monmouth University ED 556 student, Fall 2003

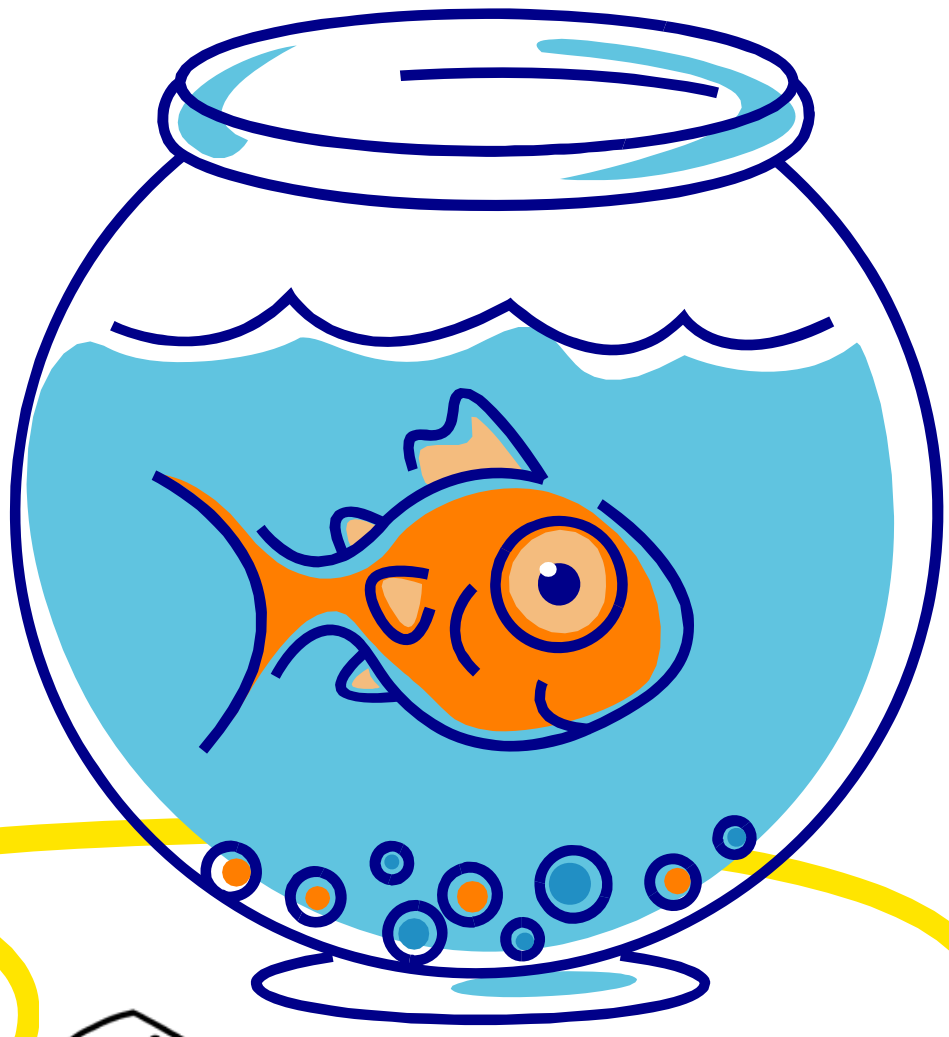
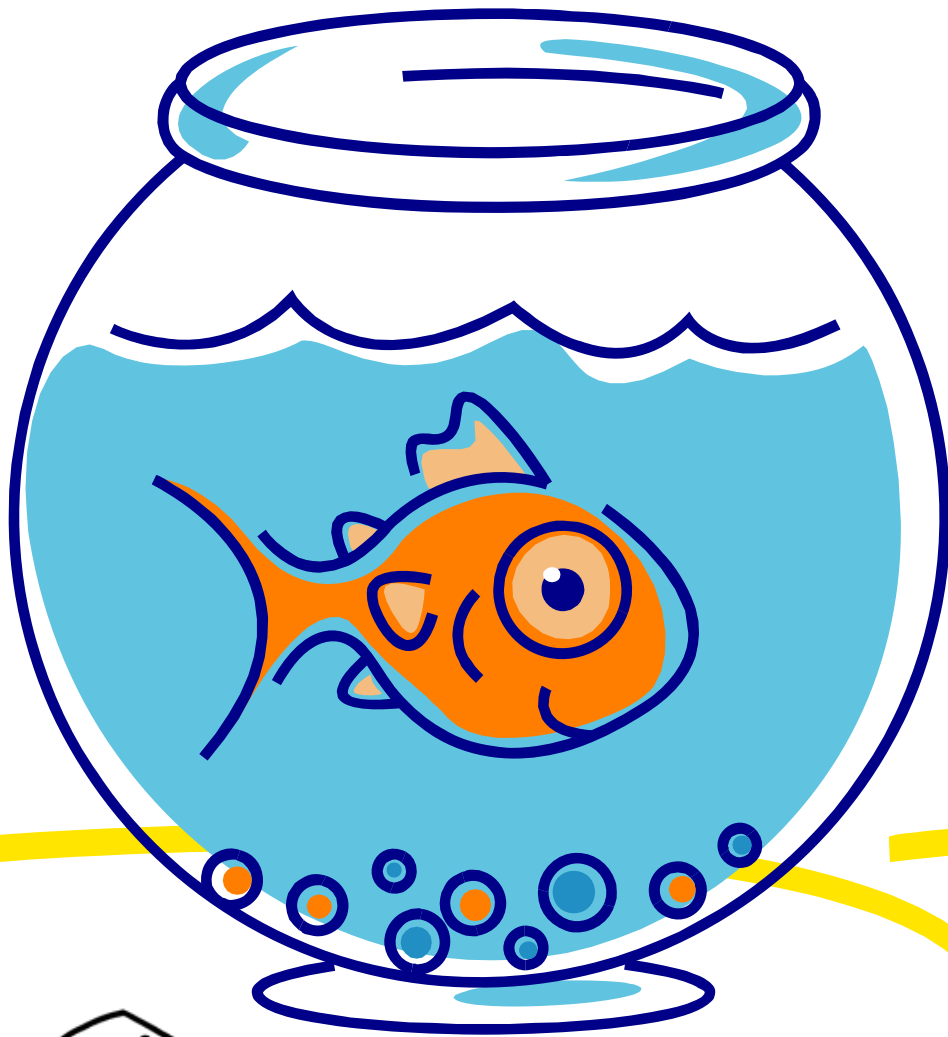
Fish Out of Water







Fish Out of Water

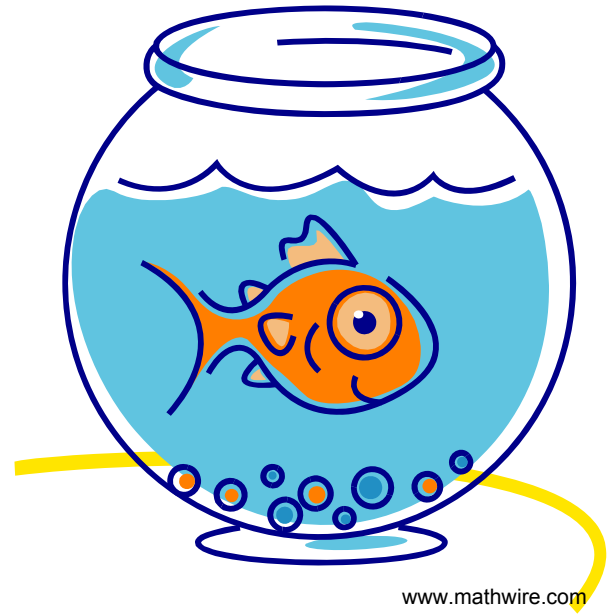
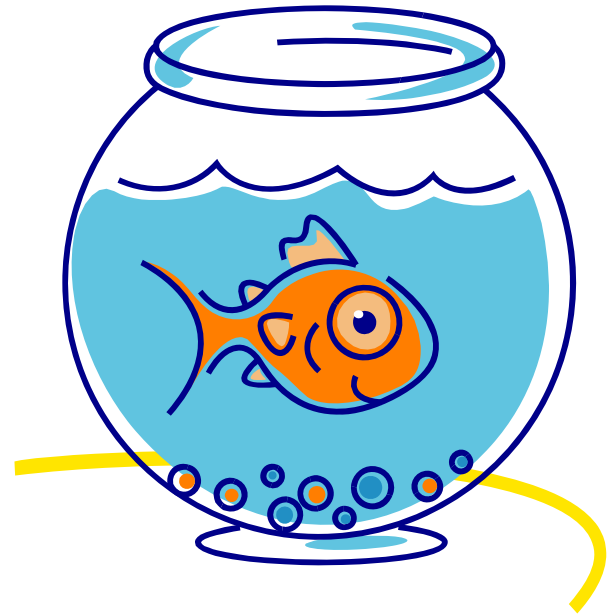
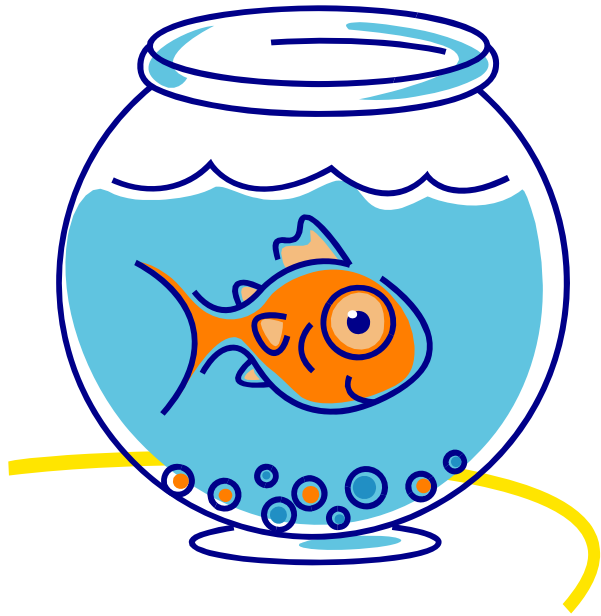


Fish out of Water Game



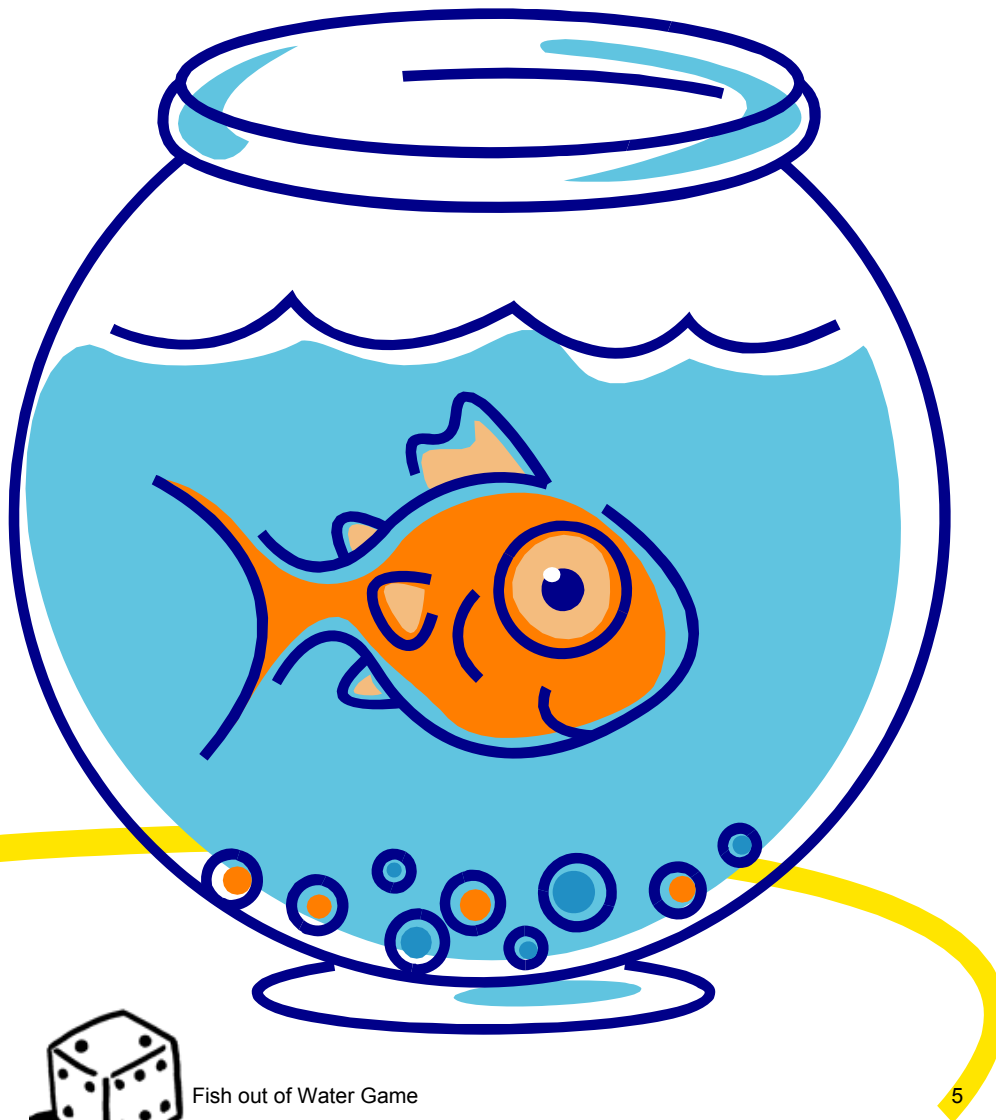
3

www.mathwire.com





Fish Out of Water



- Play with a partner.
- Use 20 counters as fish.
- Predict how many rolls you will need.
- How many rolls did you need?
- Is the game fair? Why or why not?

